



Application specific toolsets

**For automotive and transport vehicles –
High quality tooling in foam inlays providing integrated
safety and loss prevention systems.**

■ **High quality tooling designed
for the professional user**

■ **A practical and complete
assortment of tools**

■ **Durable foam trays hold
the tools firmly and protect
against damage**

■ **Potentially lost tooling is quickly
identified with the TC System foam inlays**

■ **Recommended by German
automobile manufacturers**

E & G Tools (M) Sdn Bhd

Tel : 03-78044210/03-78044202

Fax : 03-78044212

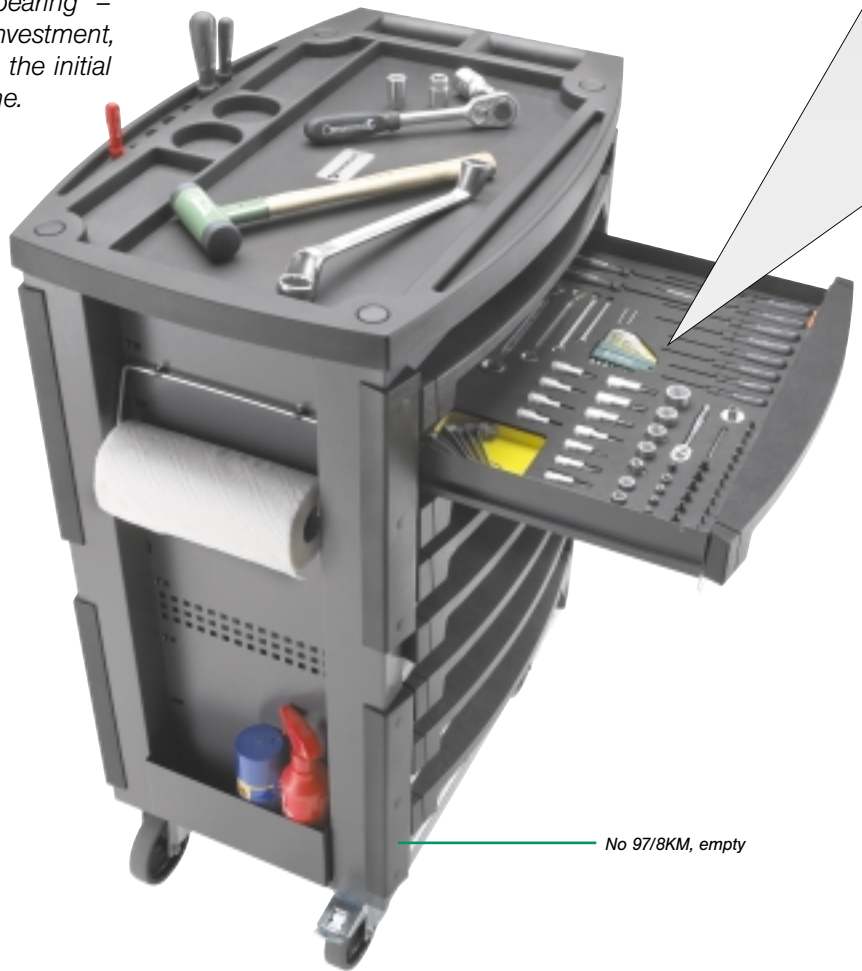
Email : egtools@gmail.com



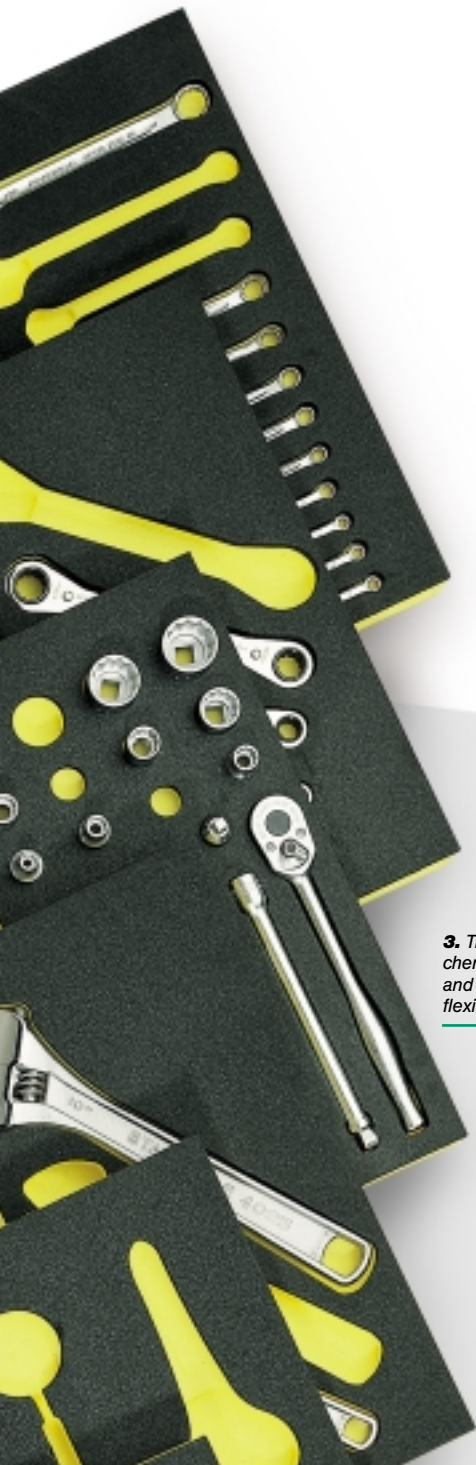
What is the Tool Control System?

The overriding principle affecting all work in the aerospace industry is "safety first". In order to ensure that no tools are left behind on board after maintenance and repair work, STAHLWILLE has developed the TC System (Tool Control System) in co-operation with British Aerospace MAD.

Apart from the aerospace industry, the Tool Control System is a worthwhile investment wherever large numbers of tools have a habit of "disappearing" – a cost-saving investment, you will recoup the initial outlay in no time.



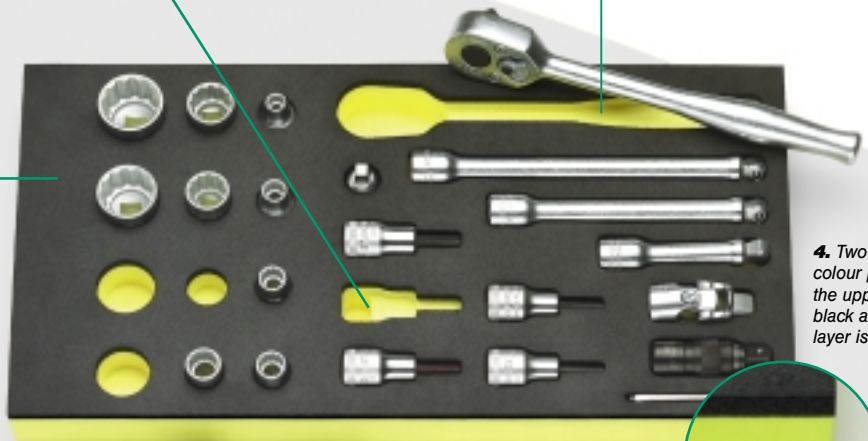
No 97/8KM, empty



1. The sculpted cut-outs for each tool are individually shaped using computer technology to provide each tool with a secure place. Additional moulded finger holes to facilitate removal and replacement of the tools.

2. The sculpted cut-outs enable you to see at a glance where each tool goes. Saves time and money.

3. The inlays are chemical-resistant and extremely flexible.



4. Two-layer, two colour plastic inlays: the upper half is black and the lower layer is yellow.





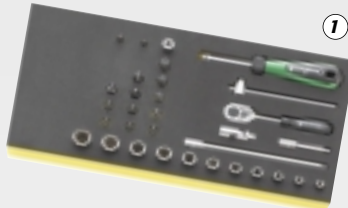
Automotive/Transport vehicle individual inlays

By selecting single inlays with tools an individual or application specific tool set can be created or supplemented.

Code 96830160 TC System Tool Set

1/4" Ratchet and Socket set

No	Size
44 K	1/4", ● 3; 4; 5; 6; 8 mm
41 K	1/4", ⊖ 0,6 x 3,5; 1,0 x 5,5; 1,2 x 8
44 P	1/4", ⊕ Gr.1; 2; 3; 4
PZ 1221	1/4", ⊕ Gr.1
PZ 1222	1/4", ⊕ Gr.2
40	1/4", ○ 5; 5,5; 6; 7; 8; 9; 10; 11; 12; 13; 14 mm
412	1/4"
415	1/4"
404	1/4"
400	1/4"

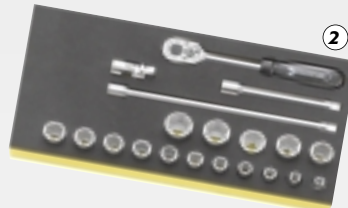


405/2	1/4", 54 mm
405/6	1/4", 150 mm
407	1/4"

Code 96830161 TC System Tool Set

3/8" Ratchet and Socket set

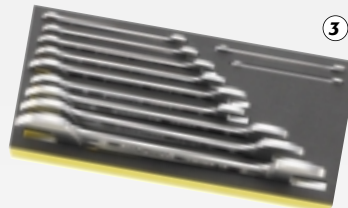
No	Size
456	3/8", ○ 7; 8; 9; 10; 11; 12; 13; 14; 15; 16; 17; 18; 19; 20; 21; 22 mm
435	3/8"
428	3/8"
427/5	3/8", 125 mm
427/10	3/8", 240 mm



Code 96830167 TC System Tool Set

Double Open Ended Spanners

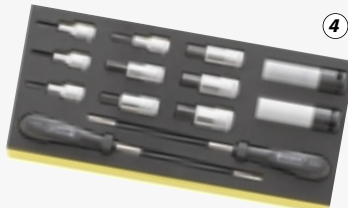
No	Size
10	6x7; 8x9; 10x11; 12x13; 14x15; 16x17; 18x21; 19x22; 24x27; 30x32; 34x36 mm



Code 96830163 TC System Tool Set

1/2" INHEX/Wheel Nut/Socket set

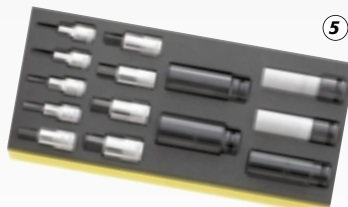
No	Size
2309 K	1/2", ○ 17; 19 mm
12506	● 6; 7 mm
54	1/2", ● 5; 6; 7; 8; 10; 12; 14; 17; 19 mm



Code 96830172 TC System Tool Set

1/2" INHEX/Wheel Nut/Impact Socket set

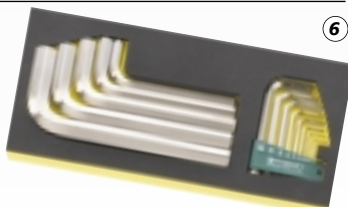
No	Size
2309 K	1/2", ○ 17; 19 mm
2309	1/2", ○ 22 mm
51IMP	1/2", ○ (85 mm), 24; 27
54	1/2", ● 5; 6; 7; 8; 10; 12; 14; 17; 19 mm



Code 96830175 TC System Tool Set

Hexagon Key Wrenches

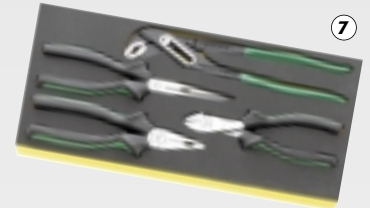
No	Size
10760CV/9	1,5; 2; 2,5; 3; 4; 5; 6; 8; 10 mm
10760CV	12; 14; 17; 19; 22 mm



Code 96838179 TC System Tool Set

Plier set

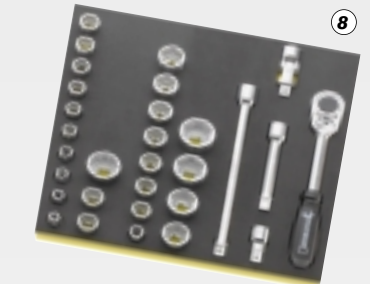
No	Size
65015180	180 mm
65516240	240 mm
66025160	180 mm
65295200	200 mm



Code 96830162 TC System Tool Set

1/2" Ratchet and Socket set

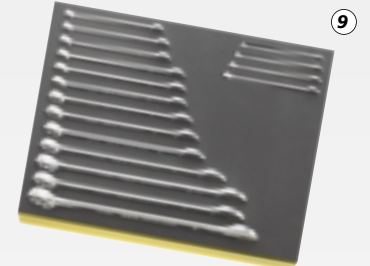
No	Size
52	1/2", ○ 12; 17; 18; 19; 20; 21; 22; 24; 25; 27; 30; 32 mm
50	1/2", ○ 8; 9; 10; 11; 12; 13; 14; 15; 16; 17; 18; 19; 30 mm
512	1/2"
509/2	1/2", 52 mm
509/5	1/2", 130 mm
509/10	1/2", 255 mm
510	1/2"



Code 96830164 TC System Tool Set

Combination Spanner set

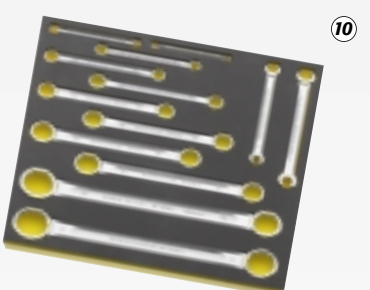
No	Size
13	6; 7; 8; 9; 10; 11; 12; 13; 14; 15; 16; 17; 18; 19; 21; 22; 24 mm



Code 96830165 TC System Tool Set

Double Ring Spanner set

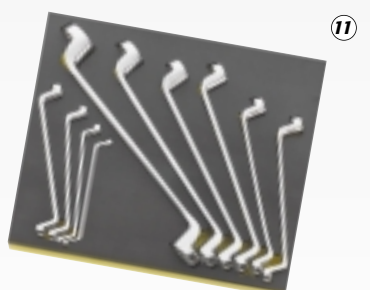
No	Size
21	6x7; 8x9; 10x11; 12x13; 14x15; 16x17; 18x19; 20x22; 21x24; 27x32; 30x34 mm
24	10x11; 12x14 mm



Code 96830166 TC System Tool Set

Double Ring Offset Spanner set

No	Size
20	6x7; 8x9; 10x11; 12x13; 14x15; 16x17; 18x21; 19x22; 24x27; 30x32 mm



Code 96830171 TC System Tool Set

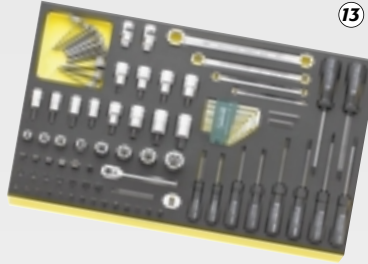
Files and misc.

No	Size
12600	3000 g lifting power
12374	
12931	
12025	
12036	



Code 96830169 TC System Tool Set

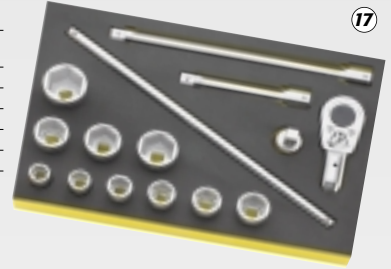
TORX/Hex Key set	
No	Size
21 TX	Gr.E6 x E8; E10 x E12; E14 x E18; E20 x E24
4750	⊕ Gr.T6; T7; T8; T9; T10; T15; T20; T25; T27; T30
40 TX	1/4", ⊕ Gr.E4; E5; E6; E7; E8
45 TX	3/8", ⊕ Gr.E10; E12; E14
47 TX	3/8", ⊕ Gr.E8; E10
50 TX	1/2", ⊕ Gr.E11; E16; E18; E20; E24
49 TX	3/8", ⊕ Gr.T40
54 TX	1/2", ⊕ Gr.T45; T50; T55; T60
10766	T6; T7
10766/9	T8; T9; T10; T15; T20; T25; T27; T30; T40
1410	1/4", ⊕ Gr.T6
1411	1/4", ⊕ Gr.T7
1412	1/4", ⊕ Gr.T8
1413	1/4", ⊕ Gr.T9
1440	1/4", ⊕ Gr.T10
1441	1/4", ⊕ Gr.T15
1442	1/4", ⊕ Gr.T20
1443	1/4", ⊕ Gr.T25
1444	1/4", ⊕ Gr.T27
1445	1/4", ⊕ Gr.T30
1446	1/4", ⊕ Gr.T40
1427	1/4", ⊕ (65 mm) Gr.T25



⊕	PZ 1221	1/4", ⊕ Gr.1
⊕	PZ 1222	1/4", ⊕ Gr.2
⊕	PZ 1223	1/4", ⊕ Gr.3
⊕	415 SGBS	1/4"
⊕	3115/1	1/4" to 1/4"
⊕	409 M	1/4" to 3/8"
⊕	44 KTXB	1/4", ⊕ Gr.T10; T15; T20; T25; T27; T30; T40
⊕	54 TXB	1/2", ⊕ Gr.T30; T40; T45; T50
⊕	49 X	3/8", ⊕ Gr.M6; M8; M10
⊕	TORX-gauge	

Code 96830173 TC System Tool Set

3/4" Ratchet and Socket set	
No	Size
55	3/4", ⊕ 22; 24; 27; 30; 32; 36; 38; 41; 46; 50 mm
552	3/4"
558	3/4"
556	3/4"
559/8	3/4", 200 mm
559/16	3/4", 400 mm



Code 96830170 TC System Tool Set

Hammer/Punch/Chisel set	
No	Size
108	150 x 3; 150 x 4; 150 x 5; 150 x 6; 150 x 8 mm
102	200 mm
103	150 mm
105	120 x 10 mm
10960	500; 800 g
10957	40 mm
12718	



Code 96830176 TC System Tool Set

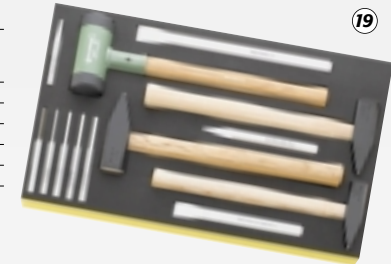
TORX/Hex Key set	
No	Size
21 TX	Gr.E6 x E8; E10 x E12; E14 x E18; E20 x E24
4750	⊕ Gr.T6; T7; T8; T9; T10; T15; T20; T25; T27; T30
40 TX	1/4", ⊕ Gr.E4; E5; E6; E7; E8
45 TX	3/8", ⊕ Gr.E10; E12; E14
50 TX	1/2", ⊕ Gr.E11; E16; E18; E20; E24
49 TX	3/8", ⊕ Gr.T40
54 TX	1/2", ⊕ Gr.T45; T50; T55; T60
10766	T6; T7
10766/9	T8; T9; T10; T15; T20; T25; T27; T30; T40
1410	1/4", ⊕ Gr.T6
1411	1/4", ⊕ Gr.T7
1412	1/4", ⊕ Gr.T8
1413	1/4", ⊕ Gr.T9
1440	1/4", ⊕ Gr.T10
1441	1/4", ⊕ Gr.T15
1442	1/4", ⊕ Gr.T20
1443	1/4", ⊕ Gr.T25
1444	1/4", ⊕ Gr.T27
1445	1/4", ⊕ Gr.T30
1446	1/4", ⊕ Gr.T40
1427	1/4", ⊕ (65 mm) Gr.T25
PZ 1221	1/4", ⊕ Gr.1



⊕	PZ 1222	1/4", ⊕ Gr.2
⊕	PZ 1223	1/4", ⊕ Gr.3
⊕	415 SGBS	1/4"
⊕	3115/1	1/4" to 1/4"
⊕	409 M	1/4" to 3/8"
⊕	44 KTXB	1/4", ⊕ Gr.T10; T15; T20; T25; T27; T30; T40
⊕	54 TXB	1/2", ⊕ Gr.T30; T40; T45; T50
⊕	49 X	3/8", ⊕ Gr.M6; M8; M10
⊕	TORX-gauge	

Code 96830177 TC System Tool Set

Hammer/Punch/Chisel set	
No	Size
108	150 x 3; 150 x 4; 150 x 5; 150 x 6; 150 x 8 mm
102	200; 300 mm
103	175 mm
105	120 x 12 mm
10960	500; 800; 1000 g
10957	50 mm



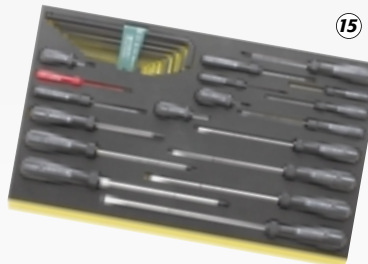
Code 96830178 TC System Tool Set

Files and misc.	
No	Size
12600	3000 g lifting power
12718	
12374	
12931	
12025	
12036	
11006	
11007	



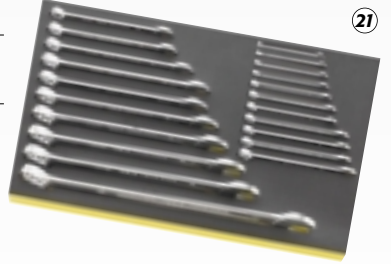
Code 96830168 TC System Tool Set

Screwdriver/Hex Key set	
No	Size
10767/9	1,5; 2; 2,5; 3; 4; 5; 6; 8; 10 mm
4728	⊕ Gr.1 (0,4 x 2,5 x 50 mm)
4720	⊕ Gr.1 (0,6 x 3,5 x 75 mm), Gr.2 (0,8 x 4 x 100 mm), Gr.5 (1,2 x 6,5 x 150 mm), Gr.6 (1,6 x 8 x 175 mm), Gr.7 (1,6 x 10 x 200 mm), Gr.8 (2 x 12 x 250 mm)
4730	⊕ Gr.1; 2; 3
4732	⊕ Gr.4
4724	⊕ Gr.2 (1 x 5,5 x 25 mm)
4734	⊕ Gr.2
4760 VDE	⊕ Gr.1 (0,4 x 2,5 x 75 mm)
4740	⊕ Gr.0; 1; 2
4744	⊕ Gr.1



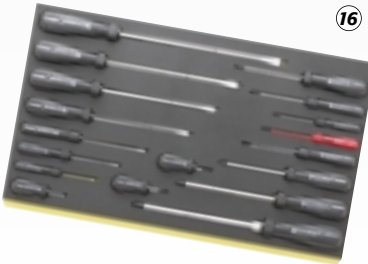
Code 96830174 TC System Tool Set

Combination Spanner set	
No	Size
13	6; 7; 8; 9; 10; 11; 12; 13; 14; 15; 16; 17; 18; 19; 21; 22; 24; 27; 30; 32; 34 mm



Code 96830179 TC System Tool Set

Screwdriver set	
No	Size
4728	⊕ Gr.1 (0,4 x 2,5 x 50 mm)
4720	⊕ Gr.1 (0,6 x 3,5 x 75 mm), Gr.2 (0,8 x 4 x 100 mm), Gr.5 (1,2 x 6,5 x 150 mm), Gr.6 (1,6 x 8 x 175 mm), Gr.7 (1,6 x 10 x 200 mm), Gr.8 (2 x 12 x 250 mm)
4730	⊕ Gr.1; 2; 3
4732	⊕ Gr.4
4724	⊕ Gr.2 (1 x 5,5 x 25 mm)
4734	⊕ Gr.2
4760 VDE	⊕ Gr.1 (0,4 x 2,5 x 75 mm)
4740	⊕ Gr.0; 1; 2
4744	⊕ Gr.1



Explanation of symbols:





Tool Set No 806/9 TCS

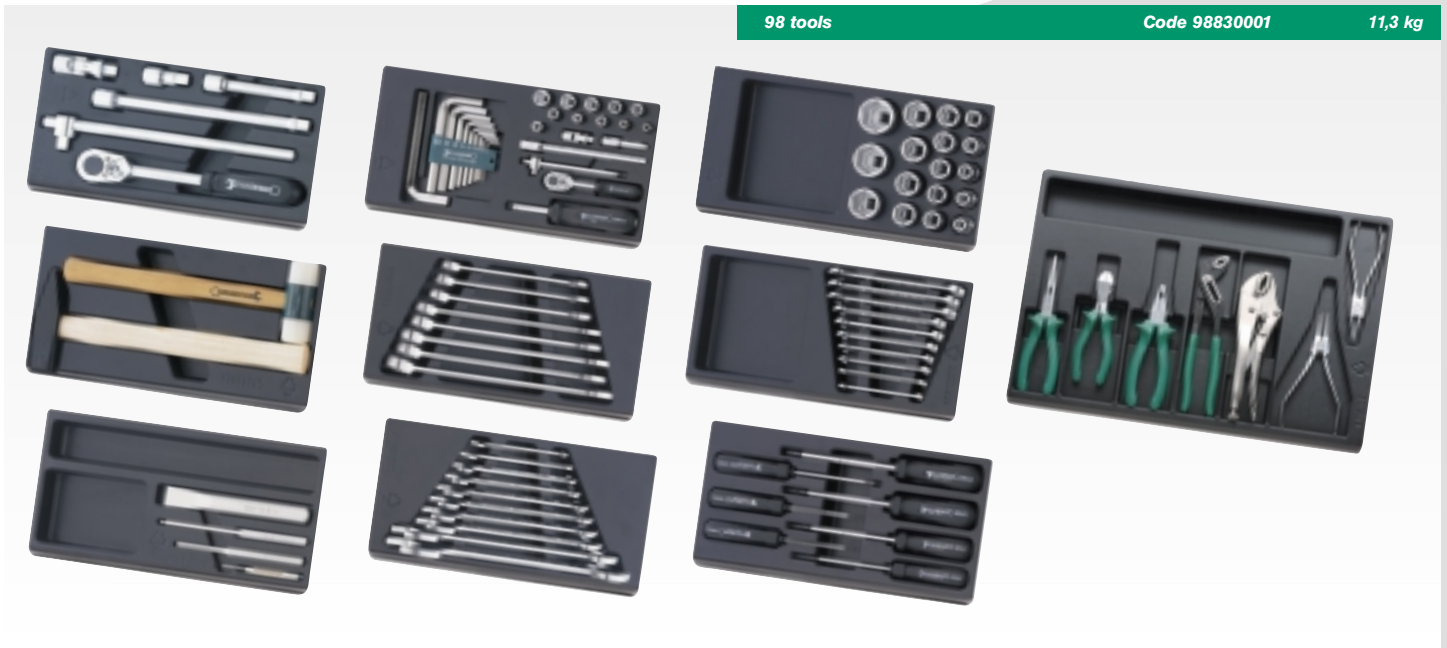
This TC System tool set consists of No 806/9 TCS consists of 7x 1/3, 1x 2/3, and 1x 3/3 inlays with 98 tools. Suitable for trolleys with at least 4 drawers.



No	Size	Code 98830004	12,53 kg
10	6 x 7; 8 x 9; 10 x 11; 12 x 13; 14 x 15; 16 x 17; 18 x 19; 20 x 22; 24 x 27; 30 x 32 mm		
13	6; 7; 8; 9; 10; 11; 12; 13; 14; 15; 16; 17; 18; 19; 20; 21; 22; 24 mm		
40	1/4", 5; 6; 7; 8; 9; 10; 11; 12; 13; 14 mm		
400	1/4", 150 mm		
404	1/4", 116 mm		
405/2	1/4", 55 mm		
405/6	1/4", 150 mm		
407	1/4", 38 mm		
412	1/4"		
415	1/4"		
10760 CV	1,5; 2; 2,5; 3; 4; 5; 6; 8; 10; 12 mm		
52	1/2", 10; 11; 12; 13; 14; 15; 16; 17; 18; 19; 20; 21; 22; 24; 27; 30; 32 mm		
506	1/2", 300 mm		
509/2	1/2", 52 mm		
509/5	1/2", 130 mm		
509/10	1/2", 255 mm		
510	1/2", 71 mm		
512	1/2"		
4720	⊖ Gr.1 (0,6 x 3,5 x 75 mm), Gr.2 (0,8 x 4 x 100 mm), Gr.4 (1 x 5,5 x 125 mm) Gr.5 (1,2 x 6,5 x 150 mm)		
4730	⊕ Gr.1; 2; 3		
65015180	180 mm		
65295200	200 mm		
65434002	J2		
65454002	A2		
65516240	240 mm		
65642250	250 mm		
66025160	160 mm		
102	175 mm		
108	150 x 6; 175 x 6 mm		
109	Gr.6; 100 x 3,4 mm		
10956	35 mm		
10960	500 g		

Alternatively the contents of tool set No 806/9TCS (98 tools) can be procured in a series of 10 ABS plastic inlays consisting of 9x 1/3, and 1x 3/3 under tool set No 806/10.

Tool Set No 806/10 in ABS plastic inlays



98 tools

Code 98830001

11,3 kg

Additional inlays can be found in our main catalogue.



Transport vehicle Tool Set No. 3022/1TCS

This TC System tool set for transport vehicle applications consists of 4x1/3, 4x2/3, 6x3/3 inlays containing a total of 299 tools. Suitable for trolleys with 10 drawers, like the combination of the new STAHLWILLE trolley No. 97/6KM and toolbox No 94KM.



The new STAHLWILLE trolley No 97/6KM (bottom) and toolbox No 94KM (top).



Your Overall is in the set!

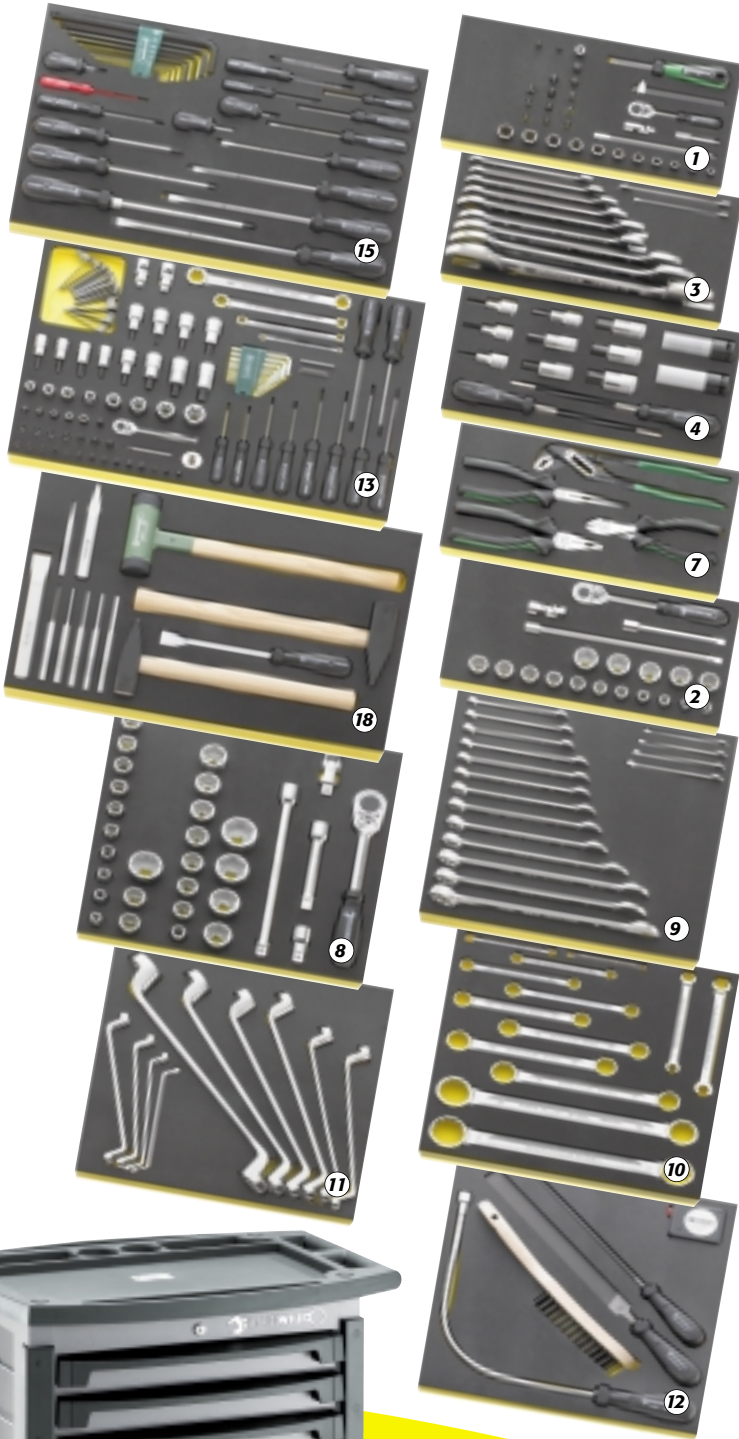
Every TC System transport vehicle tool set includes a professional Overall – free!
*Only available while supplies last

No	Size	Code 97830006	41,5 kg
44 K	1/4", 3; 4; 5; 6; 8 mm		
41 K	1/4", 0,6 x 3,5; 1,0 x 5,5; 1,2 x 8 mm		
44 P	1/4", Gr.1; 2; 3; 4		
PZ 1221	1/4", Gr.1 (2X)		
PZ 1222	1/4", Gr.2 (2X)		
PZ 1223	1/4", Gr.3		
40	1/4", 5; 5,5; 6; 7; 8; 9; 10; 11; 12; 13; 14 mm		
412	1/4"		
415	1/4"		
404	1/4"		
400	1/4"		
405/2	1/4", 54 mm		
405/6	1/4", 150 mm		
407	1/4"		
456	3/8", 7; 8; 9; 10; 11; 12; 13; 14; 15; 16; 17; 18; 19; 20; 21; 22 mm		
435	3/8"		
428	3/8"		
427/5	3/8", 125 mm		
427/10	3/8", 240 mm		
52	1/2", 12; 17; 18; 19; 20; 21; 22; 24; 25; 27; 30; 32 mm		
50	1/2", 8; 9; 10; 11; 12; 13; 14; 15; 16; 17; 18; 19; 30 mm		
512	1/2"		
509/2	1/2", 52 mm		
509/5	1/2", 130 mm		
509/10	1/2", 255 mm		
510	1/2"		
2309 K	1/2", 17; 19 mm		
2309	1/2", 22 mm		
511MP	1/2", (85 mm), 24; 27 mm		
54	1/2", 5; 6; 7; 8; 10; 12; 14; 17; 19 mm		
55	3/4", 22; 24; 27; 30; 32; 36; 38; 41; 46; 50 mm		
552	3/4"		
558	3/4"		
556	3/4"		
559/8	3/4", 200 mm		
559/16	3/4", 400 mm		
21	6x7; 8x9; 10x11; 12x13; 14x15; 16x17; 18x19; 20x22; 21x24; 27x32; 30x34 mm		
24	10x11; 12x14 mm		
20	6x7; 8x9; 10x11; 12x13; 14x15; 16x17; 18x21; 19x22; 24x27; 30x32 mm		
10	6x7; 8x9; 10x11; 12x13; 14x15; 16x17; 18x21; 19x22; 24x27; 30x32; 34x36 mm		
13	6; 7; 8; 9; 10; 11; 12; 13; 14; 15; 16; 17; 18; 19; 21; 22; 24; 27; 30; 32; 34 mm		
4728	Gr.1 (0,4 x 2,5 x 50 mm)		
4720	Gr.1 (0,6 x 3,5 x 75 mm), Gr.2 (0,8 x 4 x 100 mm), Gr.5 (1,2 x 6,5 x 150 mm), Gr.6 (1,6 x 8 x 175 mm), Gr.7 (1,6 x 10 x 200 mm), Gr.8 (2 x 12 x 250 mm)		
4730	Gr.1; 2; 3		
4732	Gr.4		
4724	Gr.2 (1 x 5,5 x 25 mm)		
4734	Gr.2		
4760 VDE	Gr.1 (0,4 x 2,5 x 75 mm)		
4740	Gr.0; 1; 2		
4744	Gr.1		
21 TX	Gr.E6 x E8; E10 x E12; E14 x E18; E20 x E24		
4750	Gr.T6; T7; T8; T9; T10; T15; T20; T25; T27; T30		
40 TX	1/4", Gr.E4; E5; E6; E7; E8		
45 TX	3/8", Gr.E10; E12; E14		
50 TX	1/2", Gr.E11; E16; E18; E20; E24		
49 TX	3/8", Gr.T40		
54 TX	1/2", Gr.T45; T50; T55; T60		
10766	Gr.T6; T7		
10766/9	Gr.T8; T9; T10; T15; T20; T25; T27; T30; T40		
10760CV/9	1,5; 2; 2,5; 3; 4; 5; 6; 8; 10 mm		
10760CV	12; 14; 17; 19; 22 mm		
1410	1/4", Gr.T6		
1411	1/4", Gr.T7		
1412	1/4", Gr.T8		
1413	1/4", Gr.T9		
1440	1/4", Gr.T10		
1441	1/4", Gr.T15		
1442	1/4", Gr.T20		
1443	1/4", Gr.T25		
1444	1/4", Gr.T27		
1445	1/4", Gr.T30		
1446	1/4", Gr.T40		
1427	1/4", (65 mm) Gr.T25		
415 SGBS	1/4"		
3115/1	1/4" auf 1/4"		
409 M	1/4" auf 3/8"		
44 KTXB	1/4", Gr.T10; T15; T20; T25; T27; T30; T40		
54 TXB	1/2", Gr.T30; T40; T45; T50		
49 X	3/8", Gr.M6; M8; M10		
TORX-gauge			
65015180	180 mm		
65516240	240 mm		
66025160	180 mm		
65295200	200 mm		
108	150 x 3; 150 x 4; 150 x 5; 150 x 6; 150 x 8 mm		
102	200; 300 mm		
103	175 mm		
105	120 x 12 mm		
10960	500; 800; 1000 g		
10957	50 mm		
12600	3000 g lifting power		
12718			
12374			
12931			
12025			
12036			
11006			
11007			



Automotive Tool Set No. 3026/1TCS

This TC System tool set for automotive applications consists of 5x1/3, 5x2/3, 3x3/3 inlays containing a total of 272 tools. Suitable for trolleys with 8 drawers, like the new STAHLWILLE trolley No 97/8KM.



Your Overall is in the set!
Every TC System Automotive tool set includes a professional Overall – free!
*Only available while supplies last



The new STAHLWILLE trolley No 97/8KM with many practical features.

No	Size	Code 97830005	24,0 kg
44 K	1/4", ● 3; 4; 5; 6; 8 mm		
41 K	1/4", ⊖ 0,6 x 3,5; 1,0 x 5,5; 1,2 x 8 mm		
44 P	1/4", ⊕ Gr.1; 2; 3; 4		
PZ 1221	1/4", ⊕ Gr.1 (2x)		
PZ 1222	1/4", ⊕ Gr.2 (2x)		
PZ 1223	1/4", ⊕ Gr.3		
40	1/4", ⊖ 5; 5,5; 6; 7; 8; 9; 10; 11; 12; 13; 14 mm		
412	1/4"		
415	1/4"		
404	1/4"		
400	1/4"		
405/2	1/4", 54 mm		
405/6	1/4", 150 mm		
407	1/4"		
456	3/8", ⊖ 7; 8; 9; 10; 11; 12; 13; 14; 15; 16; 17; 18; 19; 20; 21; 22 mm		
435	3/8"		
428	3/8"		
427/5	3/8", 125 mm		
427/10	3/8", 240 mm		
52	1/2", ⊖ 12; 17; 18; 19; 20; 21; 22; 24; 25; 27; 30; 32 mm		
50	1/2", ⊖ 8; 9; 10; 11; 12; 13; 14; 15; 16; 17; 18; 19; 30 mm		
512	1/2"		
509/2	1/2", 52 mm		
509/5	1/2", 130 mm		
509/10	1/2", 255 mm		
510	1/2"		
2309 K	1/2", ⊖ 17; 19 mm		
12506	● 6; 7 mm		
54	1/2", ● 5; 6; 7; 8; 10; 12; 14; 17; 19 mm		
13	6; 7; 8; 9; 10; 11; 12; 13; 14; 15; 16; 17; 18; 19; 21; 22; 24 mm		
21	6x7; 8x9; 10x11; 12x13; 14x15; 16x17; 18x19; 20x22; 21x24; 27x32; 30x34 mm		
24	10x11; 12x14 mm		
20	6x7; 8x9; 10x11; 12x13; 14x15; 16x17; 18x21; 19x22; 24x27; 30x32 mm		
10	6x7; 8x9; 10x11; 12x13; 14x15; 16x17; 18x21; 19x22; 24x27; 30x32; 34x36 mm		
4728	⊖ Gr.1 (0,4 x 2,5 x 50 mm)		
4720	⊖ Gr.1 (0,6 x 3,5 x 75 mm), Gr.2 (0,8 x 4 x 100 mm), Gr.5 (1,2 x 6,5 x 150 mm), Gr.6 (1,6 x 8 x 175 mm), Gr.7 (1,6 x 10 x 200 mm), Gr.8 (2 x 12 x 250 mm)		
4730	⊕ Gr.1; 2; 3		
4732	⊕ Gr.4		
4724	⊖ Gr.2 (1 x 5,5 x 25 mm)		
4734	⊕ Gr.2		
4760 VDE	⊖ Gr.1 (0,4 x 2,5 x 75 mm)		
4740	⊕ Gr.0; 1; 2		
4744	⊕ Gr.1		
21 TX	Gr.E6 x E8; E10 x E12; E14 x E18; E20 x E24		
4750	● Gr.T6; T7; T8; T9; T10; T15; T20; T25; T27; T30		
40 TX	1/4" ⊖ Gr.E4; E5; E6; E7; E8		
45 TX	3/8" ⊖ Gr.E10; E12; E14		
47 TX	3/8" ⊖ Gr.E8; E10		
50 TX	1/2" ⊖ Gr.E11; E16; E18; E20; E24		
49 TX	3/8" ⊖ Gr.T40		
54 TX	1/2" ⊖ Gr.T45; T50; T55; T60		
10766	T6; T7		
10766/9	T8; T9; T10; T15; T20; T25; T27; T30; T40		
10767/9	1,5; 2; 2,5; 3; 4; 5; 6; 8; 10 mm		
1410	1/4", ● Gr.T6		
1411	1/4", ● Gr.T7		
1412	1/4", ● Gr.T8		
1413	1/4", ● Gr.T9		
1440	1/4", ⊖ Gr.T10		
1441	1/4", ⊖ Gr.T15		
1442	1/4", ⊖ Gr.T20		
1443	1/4", ⊖ Gr.T25		
1444	1/4", ⊖ Gr.T27		
1445	1/4", ⊖ Gr.T30		
1446	1/4", ⊖ Gr.T40		
1427	1/4", ● (65 mm) Gr.T25		
415 SGBS	1/4"		
3115/1	1/4" auf 1/4"		
409 M	1/4" auf 3/8"		
44 KTXB	1/4", ⊖ Gr.T10; T15; T20; T25; T27; T30; T40		
54 TXB	1/2", ⊖ Gr.T30; T40; T45; T50		
49 X	3/8", ● Gr.M6; M8; M10		
TORX-gauge			
65015180	180 mm		
65516240	240 mm		
66025160	180 mm		
65295200	200 mm		
108	150 x 3; 150 x 4; 150 x 5; 150 x 6; 150 x 8 mm		
102	200 mm		
103	150 mm		
105	120 x 10 mm		
10960	500; 800 g		
10957	40 mm		
12718			
12600	3000 g lifting power		
12374			
12931			
12025			
12036			

Every inlay is also available separately, please refer to the inside pages for more details. →





E & G Tools (M) Sdn Bhd

Tel : 03-78044210/03-78044202

Fax : 03-78044212

Email : egtools@gmail.com

...why settle for less?

Eduard Wille GmbH & Co. KG
P.O. Box 12 01 03
D-42331 Wuppertal
Germany

Tel. +49 202 47 91-0
Fax +49 202 47 91-355
export@stahlwille.de
www.stahlwille.de



STAHlwille
GERMANY
QUALITÄT